

Orgão

Ecce Sacerdos Magnus

(Entrada do Arcebispo)

1670/94

I A

Ecce Sacerdos Magnus.

Marziale

Handwritten musical score for Organ and Choir in two voices. The score is in G major (one flat) and common time (C). It features a piano accompaniment and two vocal parts.

**First System:**

- Vocal Part 1:** *unis.* Ecce sacerdos Magnus, sacerdos Magnus!
- Piano:** Accompaniment for the first system, starting with a forte (*f*) dynamic.

**Second System:**

- Vocal Part 1:** Qui in diebus suis placuit Deo, Et in ventus est
- Vocal Part 2:** Qui in diebus suis placuit Deo, Et in ventus est
- Piano:** Accompaniment for the second system, with a mezzo-forte (*mf*) dynamic.

**Third System:**

- Vocal Part 1:** *insus.* insus. Ecce sacerdos Magnus, Ecce sacerdos Magnus, Qui in diebus suis placuit
- Vocal Part 2:** *insus.* insus. Ecce sacerdos Magnus, Ecce sacerdos Magnus, Qui in diebus suis placuit
- Piano:** Accompaniment for the third system.

1a) Et in ven-tus est ins-tus et in ven-tus est ins-tus.

De-o.

ET in ven-tus est ins-tus, ins-tus.

CANTO CANTO

This system contains the first two staves of music. The top staff is a vocal line with lyrics 'De-o.' and 'ET in ven-tus est ins-tus, ins-tus.' The bottom staff is a piano accompaniment. The key signature has two flats (B-flat major). The music is written in a 4/4 time signature.

1a) AL-le-lu-ia, al-le-lu-ia, al-le-lu-ia!

AL-le-lu-ia, al-le-lu-ia!

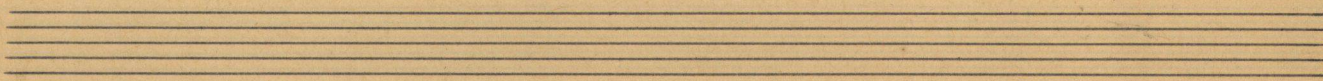
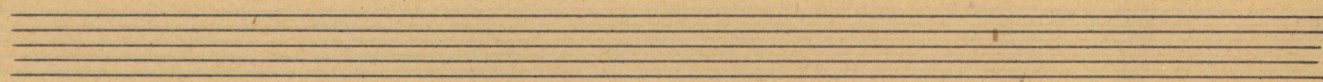
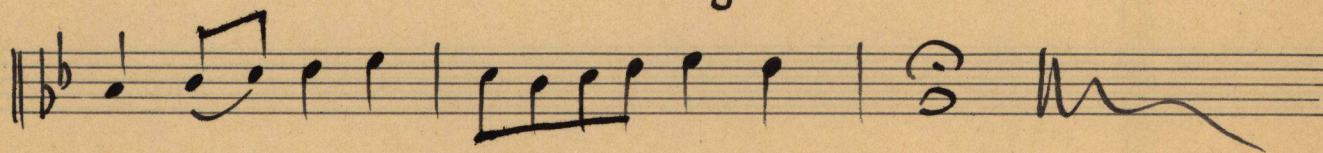
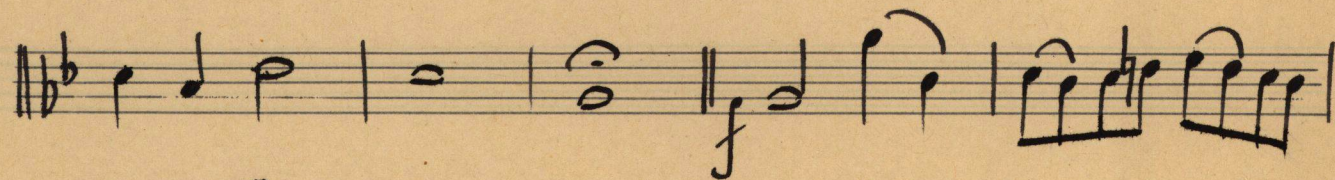
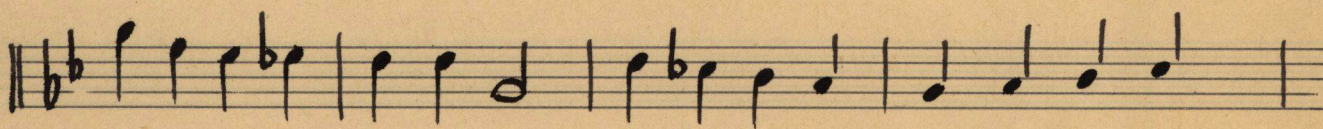
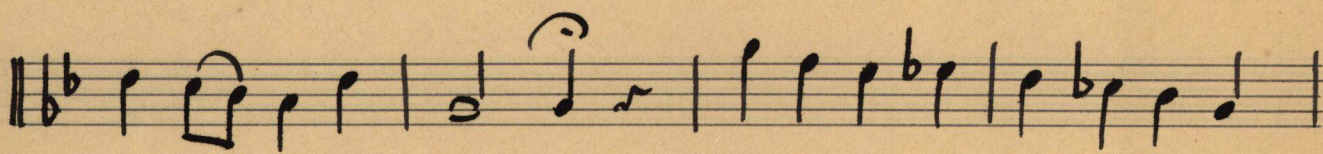
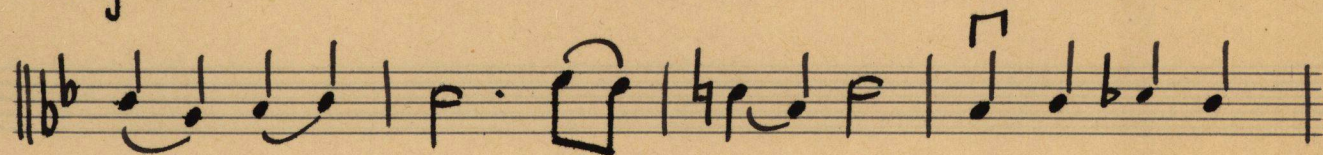
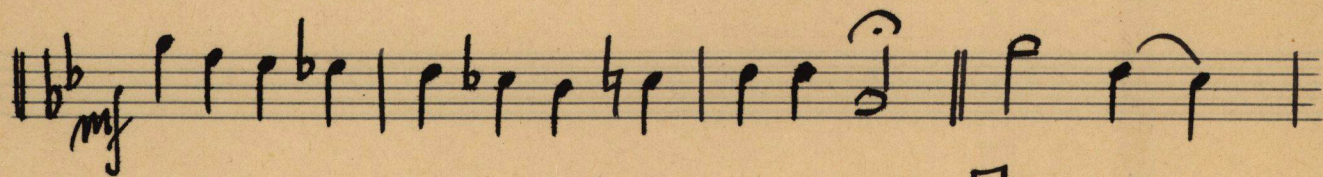
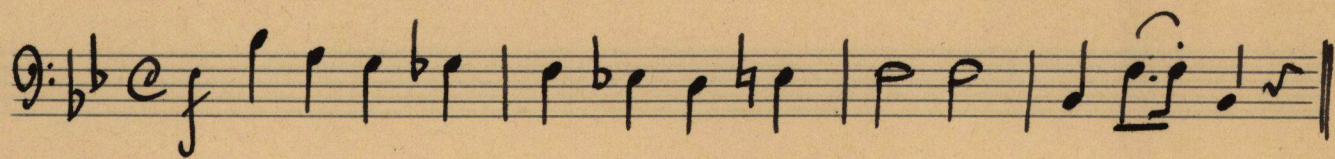
CANTO CANTO CANTO!

This system contains the next two staves of music. The top staff is a vocal line with lyrics 'AL-le-lu-ia, al-le-lu-ia, al-le-lu-ia!' and 'AL-le-lu-ia, al-le-lu-ia!'. The bottom staff is a piano accompaniment. The key signature has two flats (B-flat major). The music is written in a 4/4 time signature.

Contrabaixo

Ecce Sacerdos Magnus

Marziale



1<sup>o</sup> Violino B.

Ecce Sacerdos Magnus.

*Morziale.*

Handwritten musical score for Violino B. The score consists of ten staves of music. The first staff is a treble clef with a key signature of two flats (B-flat and E-flat) and a common time signature (C). The subsequent staves are bass clefs. The music features various rhythmic values including eighth and sixteenth notes, rests, and dynamic markings such as 'f' (forte), 'mf' (mezzo-forte), and 'p' (piano). There are also articulation marks like accents and slurs. The piece concludes with a double bar line and a fermata on the final note of the tenth staff.

-Violino Solo

Ecce Sacerdos Magnus.

Marziale

mf

v

f

cresc.

# Ecce Sacerdos Magnus.

4 Compassos Orquestra.

*Marciale*

1<sup>a</sup> *f* Ec-ce sa-cer-dos mag-nus, sa-cer-dos mag-nus!

2<sup>a</sup>

1<sup>a</sup> Qui in-di-e-bus su-is pla-cu-it De--o

2<sup>a</sup> *mf* Qui in-di-e-bus su-is pla-cu-it De--o

1<sup>a</sup> Et in ven-tus est ins-tus. *f* Ec-ce sa-cer-dos

2<sup>a</sup> Et in ven-tus est ins-tus. Ec-ce sa-cer-dos

1<sup>a</sup> mag-nus, Ec-ce sa-cer-dos mag-nus, Qui in-di-e-bus

2<sup>a</sup> mag-nus, Ec-ce sa-cer-dos mag-nus, Qui in-di-e-bus

1<sup>a</sup> su-is pla-cu-it De--o. *mf* Et in ven-tus

2<sup>a</sup> su-is pla-cu-it De--o.

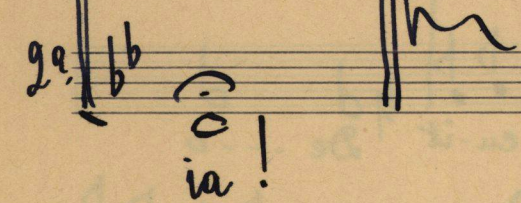
1<sup>a</sup> est-ins-tus et in ven-tus est ins-tus.

2<sup>a</sup> Et in ven-tus est ins-tus, ins-tus.

1<sup>a</sup>   
f Al-le-lu-ia, al-le-lu-ia, al-le lu

2<sup>a</sup>   
f Al-le-lu-ia, al-le-lu

1<sup>a</sup>   
ia!

2<sup>a</sup>   
ia!

