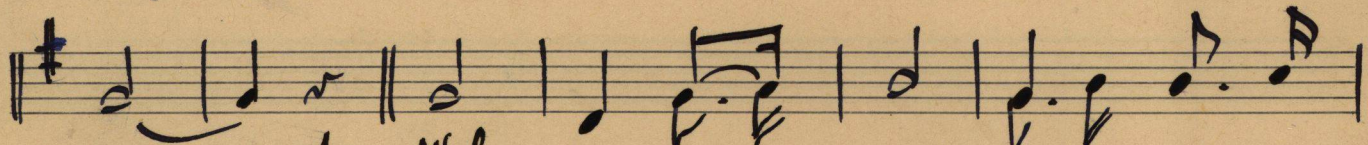
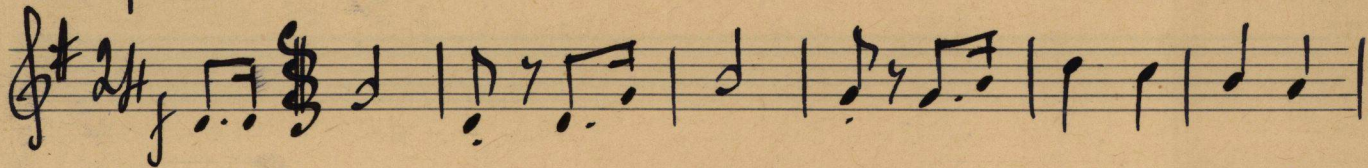


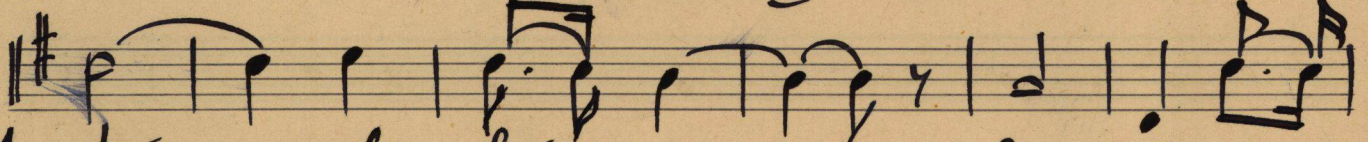
Hino da Santa Casa.

Letra: J. Lopes Rodrigues.
Música: Jean Fr. Douliery

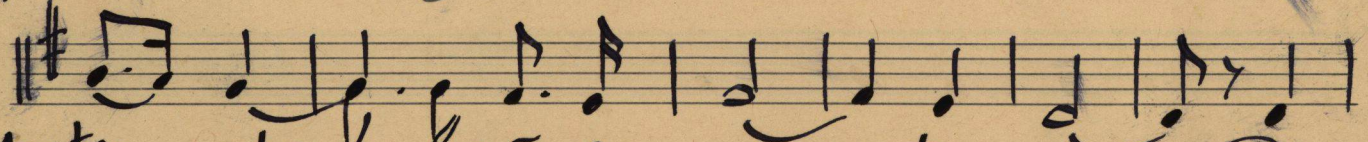
Tempo de Marcha



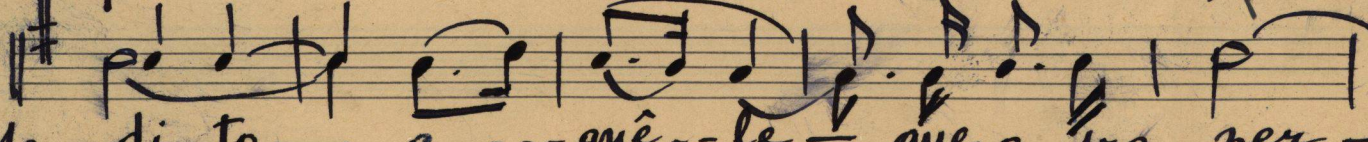
1- Mol --- ve teu --- nos --- to --- pa-ra a
2- Da San-ta --- Ca-sa --- pro-cu-
3- Ao so-fri --- men-to --- vem a-
4- Se a --- in-da e-xis --- te hu-ma-ni---



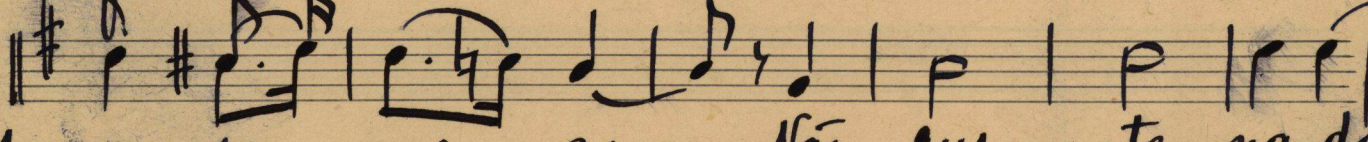
1- dor --- al --- hei --- a; --- A mão es ---
2- ran --- do a por --- ta, --- Que di-a e
3- qui --- pôr --- têr --- mo; --- Nes-te lu ---
4- tá --- ria --- ~~o~~ --- mor, --- E se teu



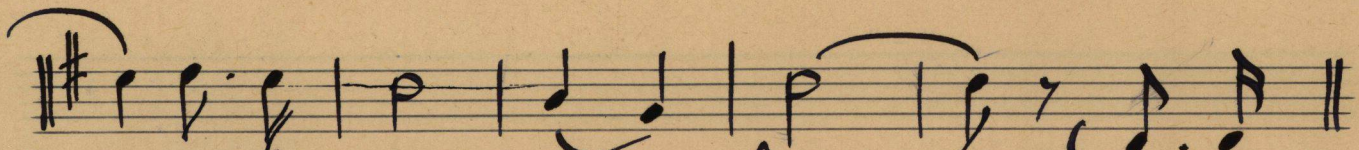
1- ten --- de, --- não im --- por --- ta a quem; Ben-
2- noi --- te, --- en-con-tra --- rás --- a --- ller-ta, --- ve ---
3- gar que --- q-ua-ri --- da --- de a --- que-ces, Há
4- pei --- to --- nes-te a --- mor se a --- bra-sa, Trans-



1- di-to --- a --- quê --- te --- que o fra --- zer ---
2- rás --- sur --- gir --- uma es-pe --- ran ---
3- sem-pre --- um lei --- to --- pa-ra o cor ---
4- for-ma --- em ri --- so --- o des-es --- pe ---

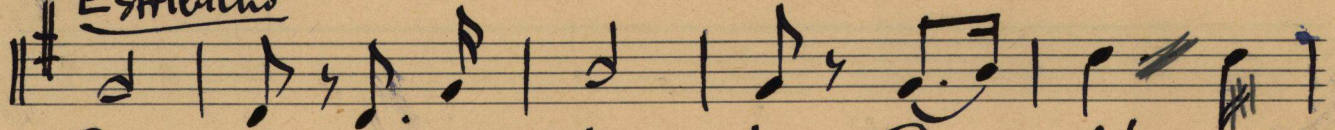


1- se --- mei --- a; --- Não cus --- ta na-da ---
2- ca --- mor --- ta, --- Te --- rás, de pron-to ---
3- po en-fêr --- mo, --- Há sem --- pre va-ga ---
4- roa, --- los dor, --- Co --- lhen --- do au-xi-lios ---

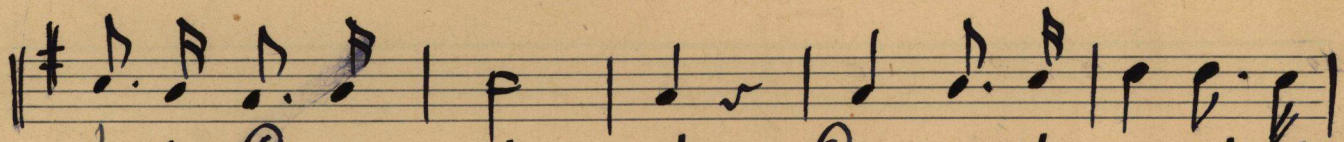


1- pra-ti--car o bem. }
 2- ~~Uma~~ co-lhi---da cer--ta. } San-ta
 3- pa-rao que pa-----de-----ce.
 4- pa-rãa San-ta Ca-----sa.

Estrilho



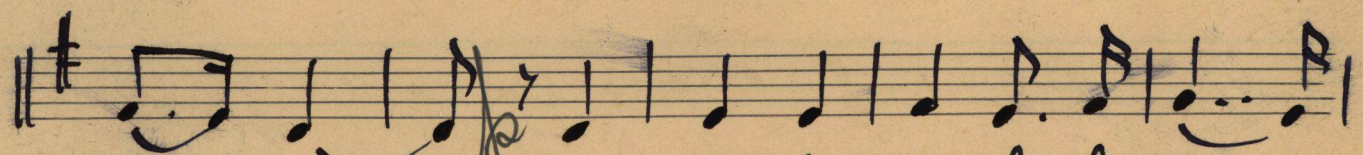
Ca--sa, na ver--da---de, Re---fi-gio



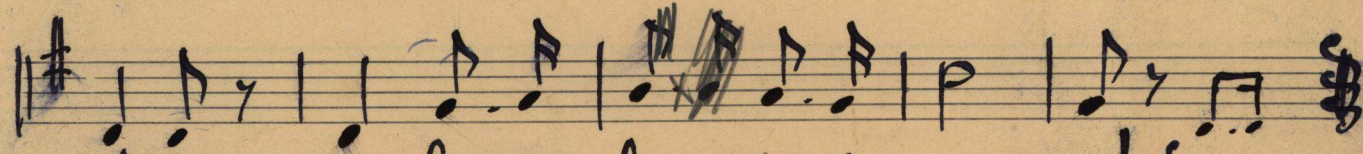
da Ca-ri--da---de, Cum-pre teu san-to des--



ti-----no --- Pros-se-que a-tra-vés dos



a-----nos, Le--van-do os ma-les hu-ma-----



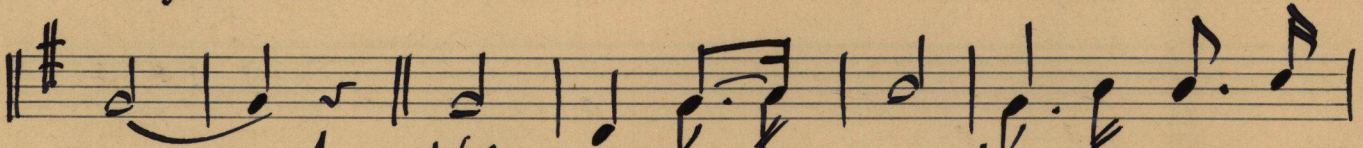
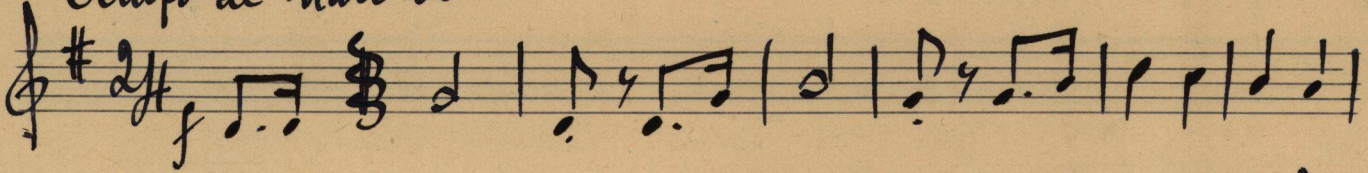
nos, Um be-ne-fi-cio di-vi--no! f DS.

496194
I.A.

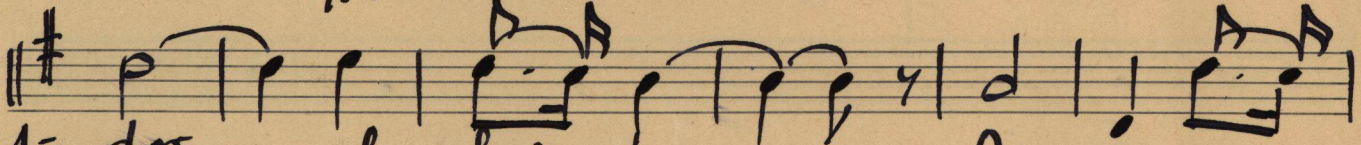
Hino da Santa Casa.

Letra: J. Lopes Rodrigues
Musica: Jean Francois Douliery

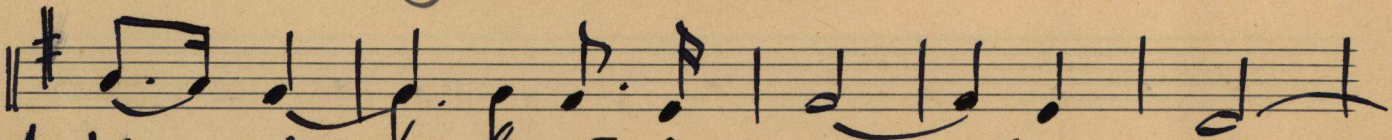
Tempo de Marcha



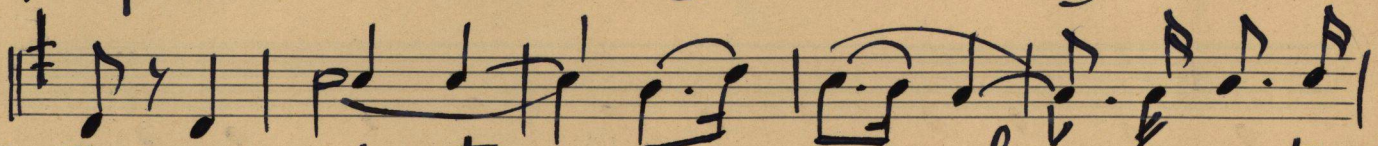
1- Vol...ve teu - ros-to - pa-ra a
 2- Da San-ta - Ca-sa - pro-cu-
 3- Ao so-fri - men-to - vem a-
 4- Se a - lin-da e - xis - te hu - ma - ni -



1- dor - al - hei - a; A mão es -
 2- ran - doa por - ta, Que di - a e
 3- qui - pôr têr - mo; Nes - te lu -
 4- tá - ri - a a - mor, E se teu



1- teu - de, não in - por - ta a quem;
 2- noi - te, en - con - tra - rás - a - ber -
 3- gar que - ga ca - ri - da - de a - que -
 4- pei - to nes - te a - mor - se a - bra -



1- Ben - di - to - a - que - le que o fra -
 2- ta, ve - rás - sur - gir - u - ma es - pe -
 3- ce, Há sem - pre - um - lei - to - pa - ra o
 4- sa, Trans - for - ma - em - ri - so - o des - es -



1- - yer - se - mei - a; - Não cus - ta
 2- - ran - ca - mor - ta, - Te - rás, de
 3- - cor - po en - fêr - mo, - Há sem - pre
 4- - pe - ro, a dor - dor, - Co - lhen - do au -

1. na--da -- pra-ti-car o -- bem. -- } Santa
 2. pron-to ~~de~~ ma a-co-lhi -- da -- cer-ta. }
 3. va-gã -- pa-ra-o que pa--de-ce.
 4. xi--lps -- pa-ra-a San--ta -- Ca--sa.

Estribilho

Ca -- sa, na ver -- da -- de, Re -- fú -- gio.

da Ca - ri -- da -- de; Cum-pretu san-to des-

ti -- no -- Pros-se-que a tra-vés dos a -- nos, --

Re -- van-do aos ma-les hu -- ma -- nos,

Um be-ne-fi-cio di -- vi -- no! **f** D.S.

Handwritten musical notation on a grand staff. The upper staff contains several measures of music with notes and rests. The lower staff contains rests and some faint markings.

A set of empty musical staves, consisting of two five-line staves.

Handwritten musical notation on a grand staff. The upper staff contains several measures of music with notes and rests. The lower staff contains notes and rests.

A set of empty musical staves, consisting of two five-line staves.

A set of empty musical staves, consisting of two five-line staves.

A set of empty musical staves, consisting of two five-line staves.

A set of empty musical staves, consisting of two five-line staves.

A set of empty musical staves, consisting of two five-line staves.

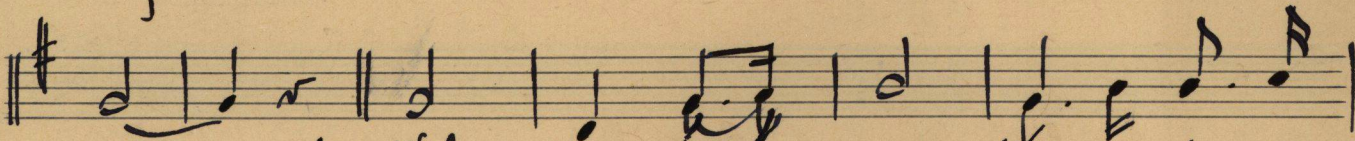
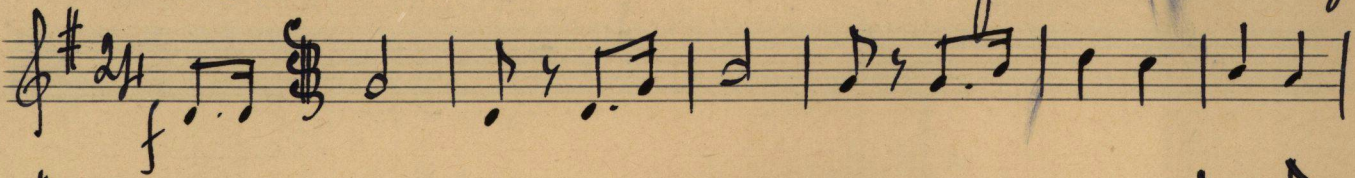
A set of empty musical staves, consisting of two five-line staves.

A set of empty musical staves, consisting of two five-line staves.

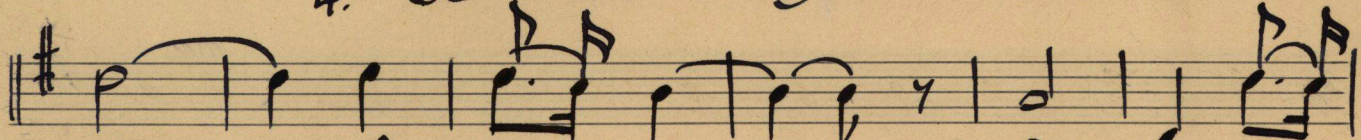
Hino da Santa Casa

Letra: J. Lopes Rodrigues.
Musica: Jean Fr. Douliery

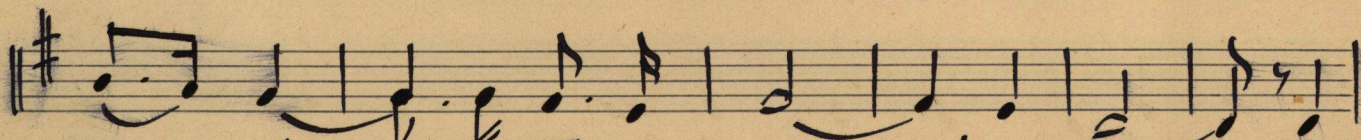
6º de Marcha



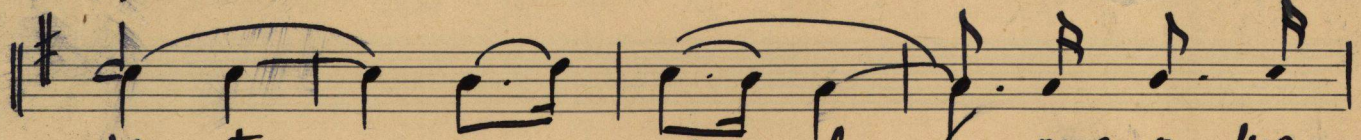
1.- Vol... ve teu... nos... to... pa-ra-a
2.- Da San-ta... Ca... sa... pro-cu-
3.- Ao so... fri... men... to... vem a-
4.- Se a... in-dae... xis... te hu-ma-ni-



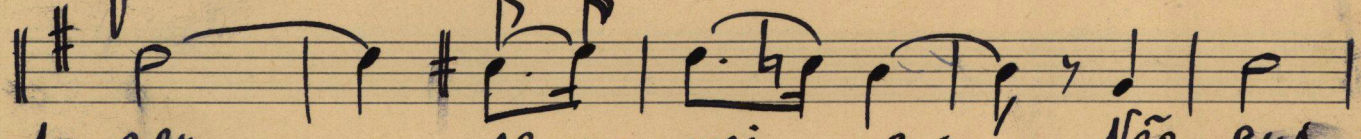
1- dor — al... hei... a; — A mão es...
2- ran... do a por... ta — Que di... a e
3- qui — pô... têr... mo; — Nes... te lu...
4- tá... rí... a... mor, — E se teu



1- teu... de, — não in... por... ta a quem Ben-
2- noi... te — en-con-tra... rás — a... ber-tá, Ve...
3- gar que — ga ca-ri... da... de a-que-ce, Há
4- pei... to — nes-te a... mor — se a... bra-sa, Trans-



1- di... to — a... quê... le — que o fra...
2- rás — sur... gir — u... ma es-pe...
3- sem-pre — um lei... to — pa-ra o
4- for... ma — em ri... so — o des-es-



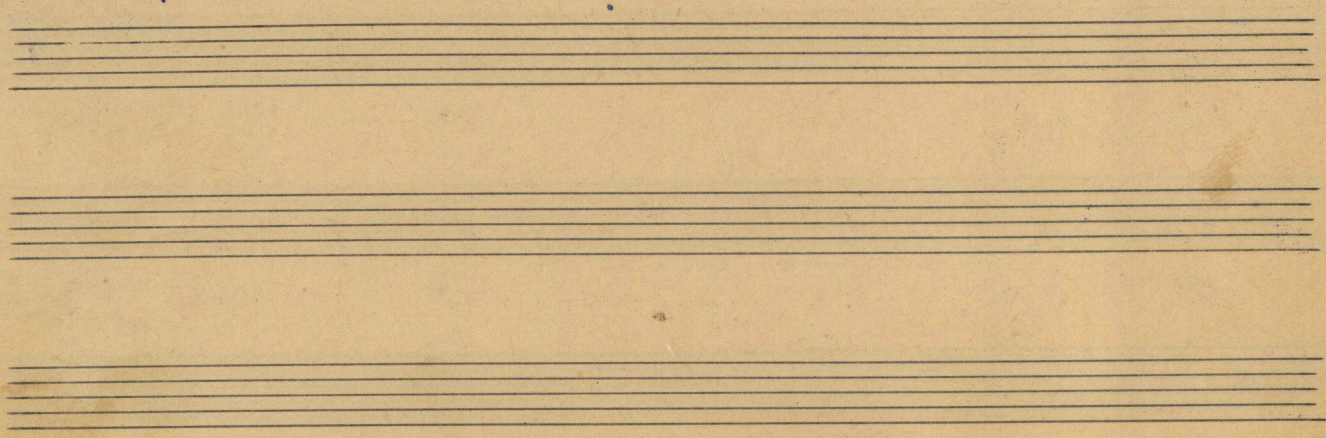
1- zer — se... mei... a; — Não cus...
2- ran... ça — mor... ta, — Te... rás,
3- cor... po en... fêr... mo, — Há sem-
4- pe... ro a dor... dor, — Co-lhen-

1- ta — na — da — pra — ti — car o — bem —
 2- de — pron — to u — ma a — co — lhi — da — cer —
 3- fre — va — ga — pa — ra o que pa — de —
 4- do au — xi — lios — pa — ra a San — ta — Ca —

Estrililho

1. — } San — ta Ca — sa, na ver — da — de, Re —
 2. ta . }
 3. ce. }
 4. sa. }

fú — gio — da do Ca — ri — da — de, Cum — pre teu
 san — to des — ti — no — Pros — se — que a — tra — vés dos
 a — nos, Le — van — do aos ma — les hu — ma —
 nos, — Um be — ne — fi — cío di — vi — no *D.S.*



Handwritten musical score on aged paper. The score consists of four staves. The first three staves are grouped by a brace on the left. The first staff is in treble clef with a key signature of one flat (Bb) and a time signature of 2/4. It contains rests in the first two measures and a triplet of eighth notes in the third measure. The second staff is also in treble clef with a key signature of one flat and a time signature of 2/4, containing rests in the first two measures and a single eighth note in the third measure. The third staff is in bass clef with a key signature of two flats (Bb, Eb) and a time signature of 2/4, containing rests in the first two measures and a single eighth note in the third measure. The fourth staff is in treble clef with a key signature of one flat and a time signature of 2/4, containing a melodic line with notes, slurs, and accents.

Ten empty musical staves on aged paper, arranged vertically. Each staff consists of five horizontal lines.

Handwritten musical notation for the first system, including a treble clef, a key signature of two flats (B-flat and E-flat), and a time signature of 8/8. A brace on the left indicates the system covers two staves.

Handwritten musical notation on a single staff, featuring a melodic line with a series of eighth notes and a trill-like passage.

Handwritten musical notation for the second system, consisting of two staves. The upper staff is empty, and the lower staff contains a few vertical lines, possibly representing a bass line or accompaniment.

Handwritten musical notation on a single staff, featuring a melodic line with a series of eighth notes and a trill-like passage.

Handwritten musical notation for the third system, consisting of two staves. The upper staff contains a few notes, and the lower staff contains a few vertical lines.

Handwritten musical notation for the fourth system, consisting of two staves. The upper staff contains a melodic line with a series of eighth notes and a trill-like passage. The lower staff contains a few vertical lines.

Handwritten musical notation for the fifth system, consisting of two empty staves.

Aino da Santa Casa

Vol - - ve ten ros - - to pa - ra a dor - - al - hei - -

a; A mão es - ten - - de; não im - por - - te a

quem; Bem - di - to a - que - le que o pra - zer se -

mei - - a Bem - di - to a - que - le que o pra - zer

mei - - a não cus - ta na - - da pra - ti -

car o bem -

le - van - do aos ma - les hu -

ma - - nos

Um be - ni - fi - cio di - vi - no -

8

da pra-ti.

32 8 não cus-ta na-

Cum FA

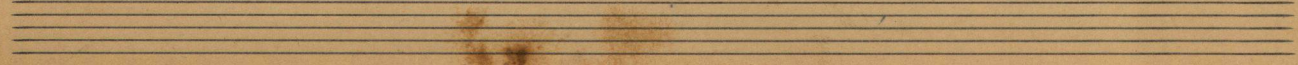
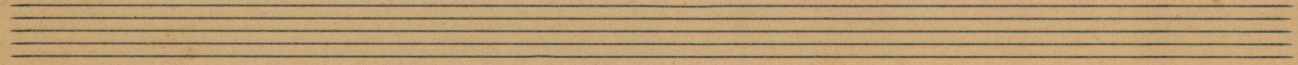
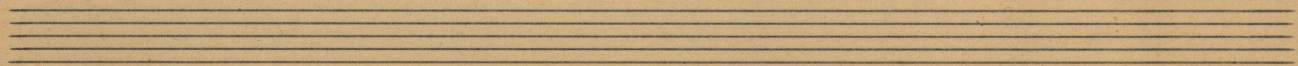
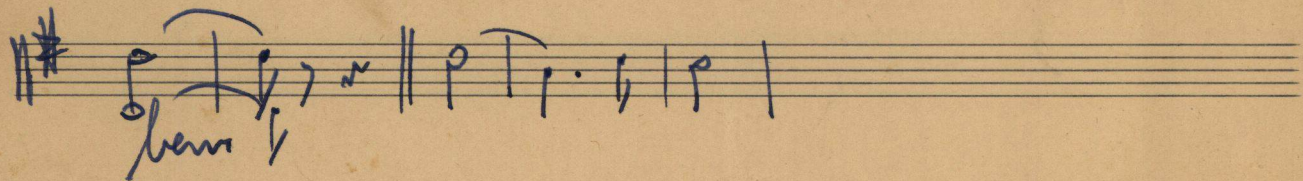
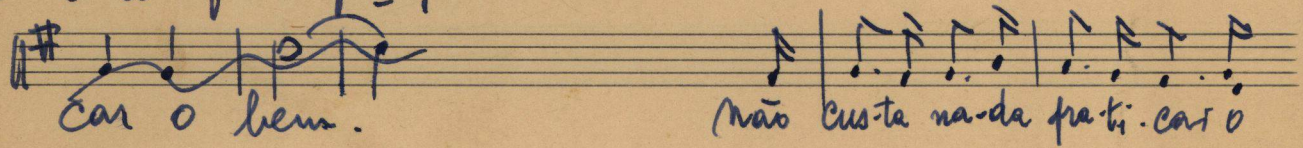
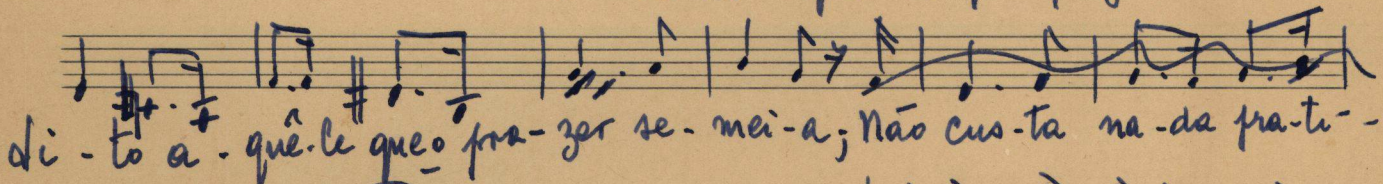
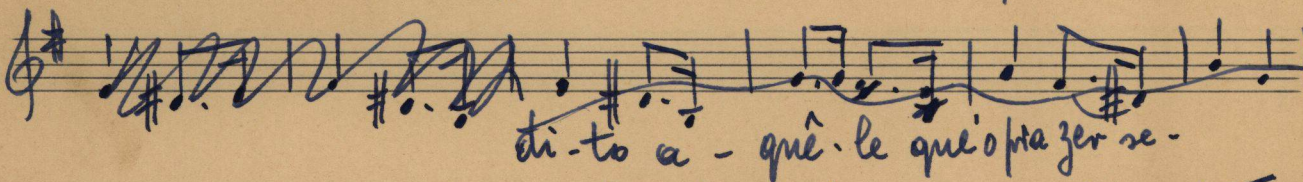
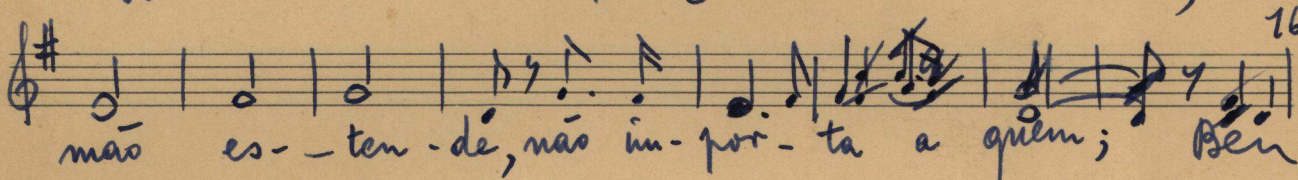
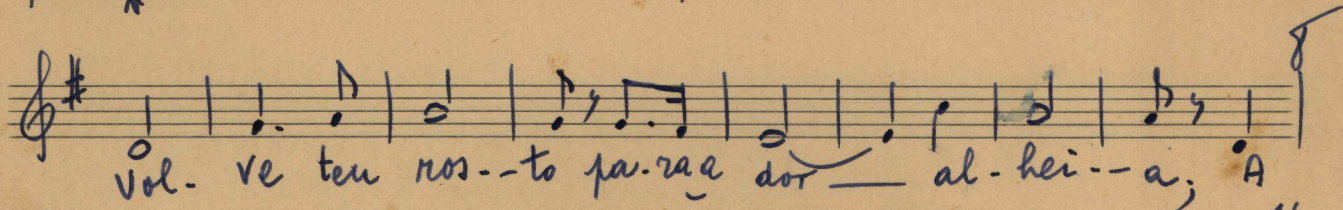
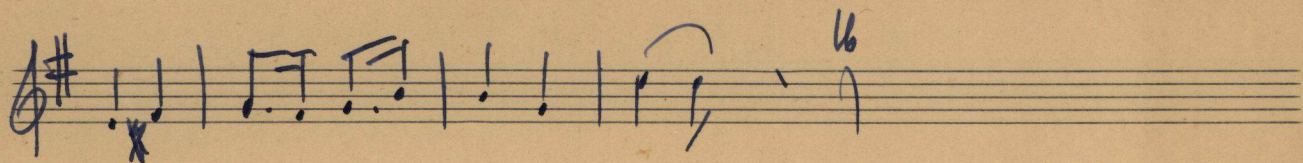
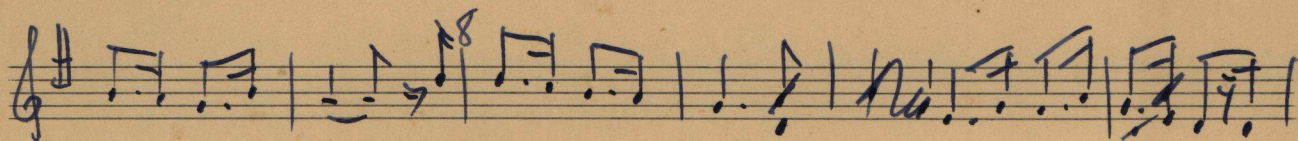
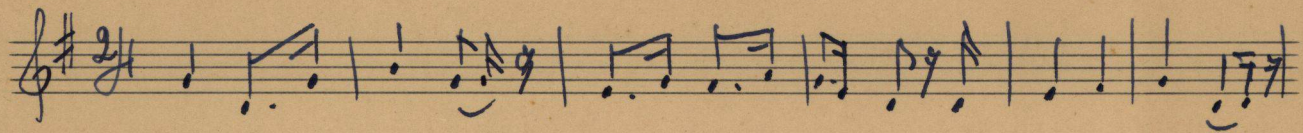
Vol-ve teu ros-to pa-ra-a dor al-hei--a,

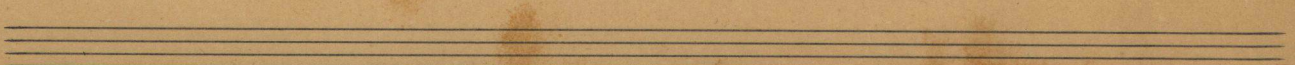
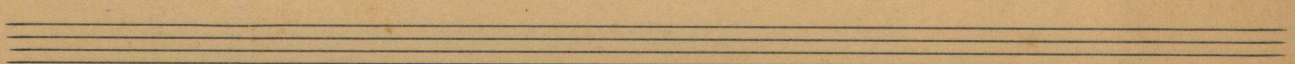
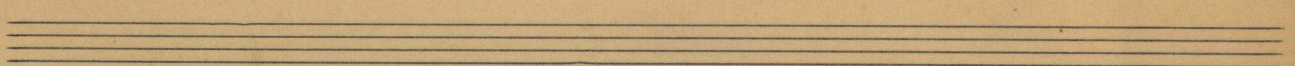
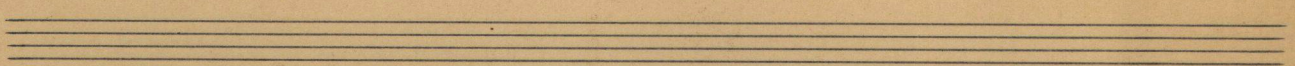
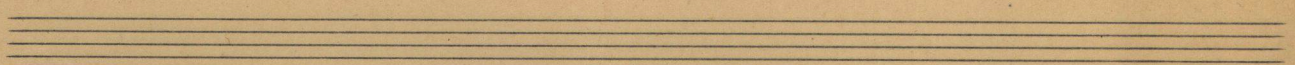
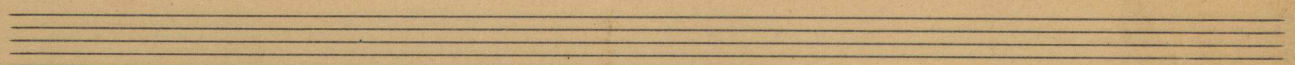
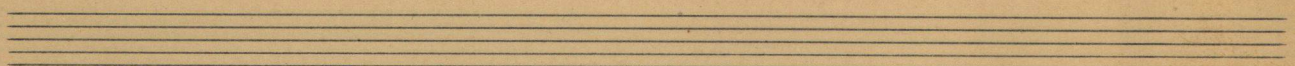
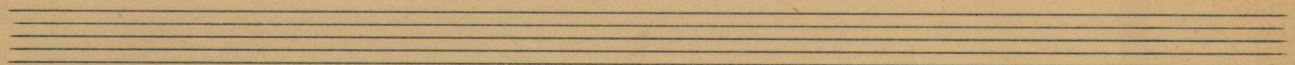
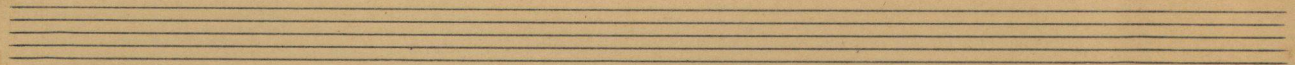
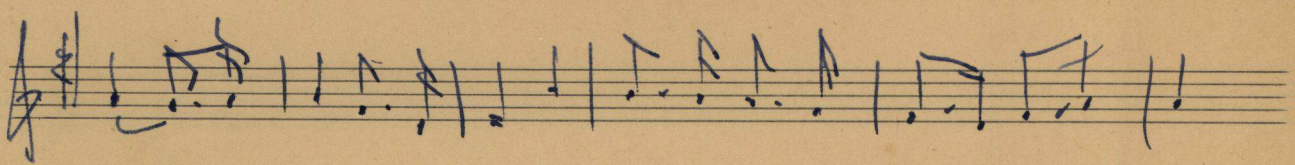
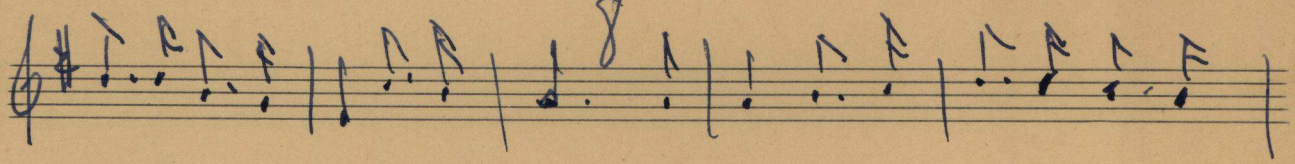
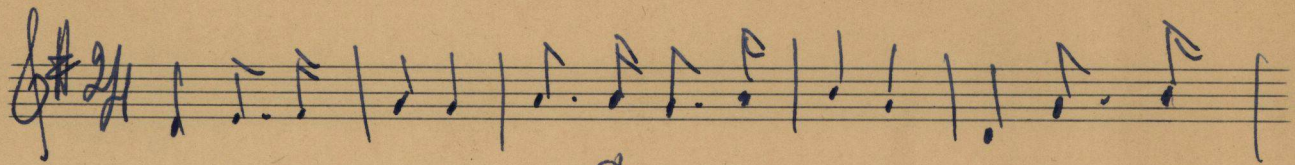
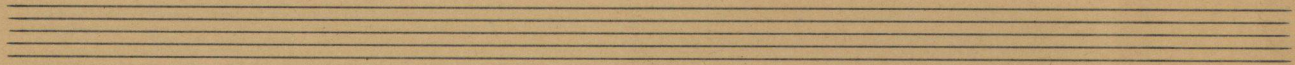
A mão es-ten-de, não in-por...ta a quem; Bén-

di-to-to a-que-le - que o pra-zer se-mei-a;

não

cus-ta na-da - pra-ti-car

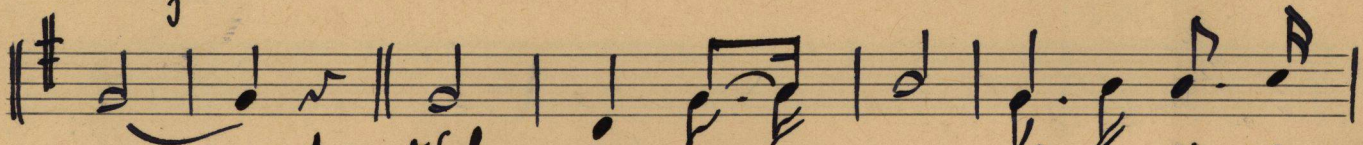
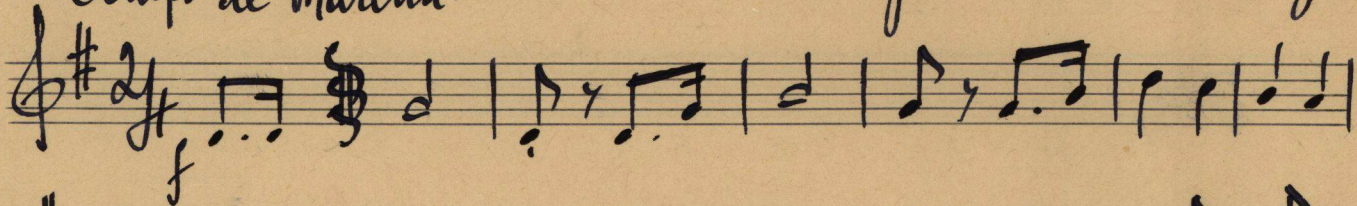




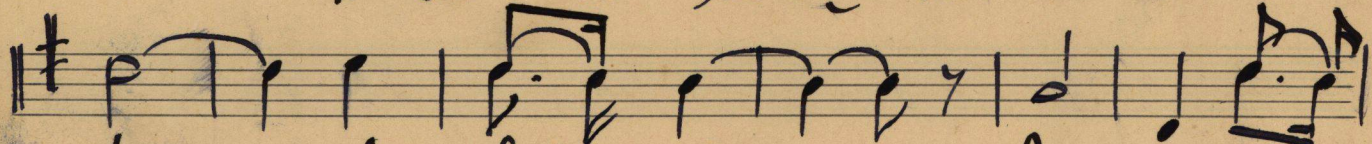
Hino da Santa Casa

Letra: J. Lopes Rodrigues
Música: Jean Fr. Douliery

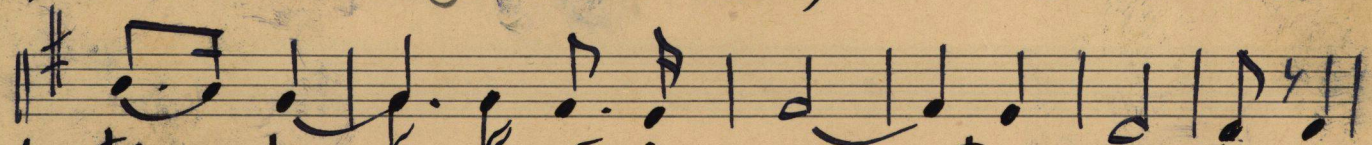
Tempo de Marcha.



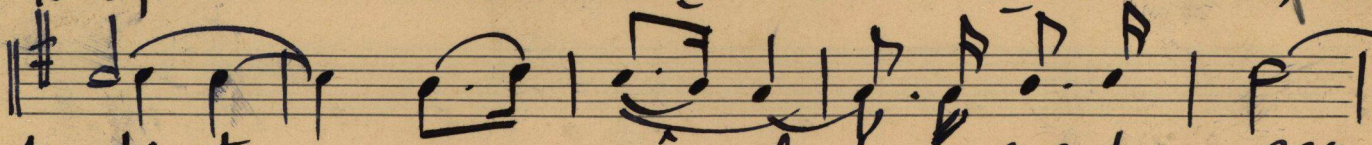
1.- Vol...ve teu...ros...to pa-ra a
2.- Da San-ta - Ca-sa - pro-cu-
3.- Ao so-fi...men-to - vem a...
4.- Se a...lin-da e-xis...te hu-ma-ni--



1- dor - al - hei - a; A mão es...
2- ran - do a por - ta Que di-a e
3- qui - pôr - tã - mo; Nes-te lu-
4- tá - ria e mor - mor, E se teu



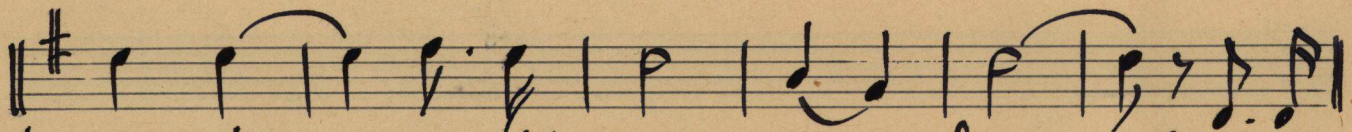
1- ten - de, não in - por - ta a quem; Ben-
2- noi - te, en - con - tra - rás - a - ber - ta - ve-
3- gar que q - a ca - ri - da - de a - que - ce; Há
4- - pei - to nes - te a - mor - se a - bra - sa, Trans-



1- di - to a - que - le - que o fra - zer
2- rás sur - gir - tu - ma es - pe - ran-
3- sem - pre - um lei - to - pa - ra o cor-
4- for - ma - em ri - so - o des - es - pe -

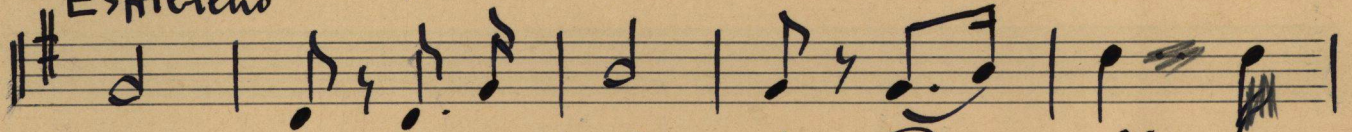


1- se - mei - a; Não cus - ta -
2- - sa - mor - ta; Te - rás, de -
3- - po en - fêr - mo, Há sem - pre
4- - ro, e dor - dor, Co - lhen - do au -

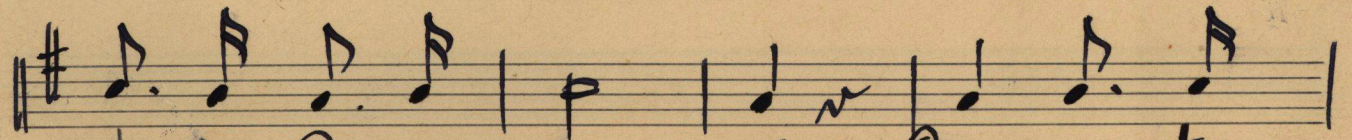


1- na - da — pra - ti - cas o - bem —
2- pron - to ~~uma~~ a - co - lhi - da - cer - ta. } Santa
3- va - ga — pa - ra o que pa - de - ce. }
4- xi - lios — pa - ra a San - ta — Ca - sa.

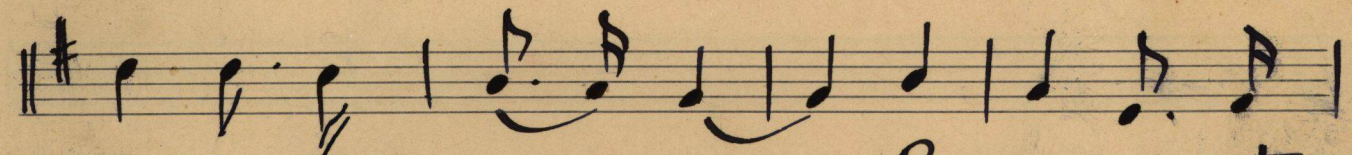
Estribilho



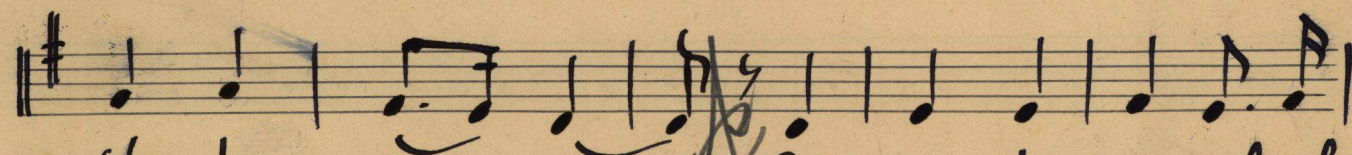
Ca - sa, na ver - da - de, Re - fu - gio -



da da Ca - ri - da - de, Cum - pre teu



san - to des - ti - no — Pros - se - que a - tra -



vés dos a - nos, Le - van - do aos ma - les hu -



- ma - nos, Um be - ne - fi - cío di - vi - no! **f** D.S.

Hino da Santa Casa.

Letra: J. Rodrigues

Lopes

Música: J. F. Donliç

Co-de Marcha

18/4/63

1. Vol-... ve ten ros-to pa-ra a
 2. Da San-ta Ca-sa pro-cu-
 3. Ao so--fri--men-to ven a--
 4. Se ain-da e-xis-te hu-ma-ni-

1-dos al... hei--a; A mão es--
 2-ran-do a por--ta Que di-a e
 3-qui pôr têr--mo; Nes-te lu--
 4-tá--rio a--mor, E se ten

1-ten-de, não im--por--ta a quem; Pen-
 2-noi-te en-con-tra-rás a ber--ta Ve-
 3-gar que a ca-ri-da--de a-que--ce Há
 4-pei-to neste a--mor se a-bra--sa, Trans-

1-di--to a--quê--le que o pra-
 2-ras sur--gir tu--ma es-pe-
 3-sem-pre um ler--to pa-ra o
 4-for-ma em ri--so o deses-

1-zer se--mei--a; Não cus--
 2-ran--ça mor--ta, Te-rás,
 3-cor-po en--fêr--mo, Há sem--
 4-pl--so a dor, Col-then-

1-ta na-da pra-ti--car o-bem. San-ta
 2-de fran-tu-pa a-col-hi--da Cer-ta
 3-pre va-ga pa-rao que pa--de-el
 4-do au-xi-lios para a San-ta Ca-sa.

Estribilho

Ca - sa, na ver - da - - - de, Re - - - fi - - gi -

o da Ca - ri - - da - - de, Cum - pre teu san - to des -

ti - - no: Pros - - se que a - tra - vés dos a - - nos,

plé - ran - do aos ma - les hu - ma - - - nos

um be - ne - fi - ci - o di - vi - no D.S.

ma

um be - ne - fi - ci - o di - vi - no D.S.