

"Alices das Flores" - Valsa.

F. Cabral

Tempo de Valsa Mod^a



Handwritten musical notation for the first section of the piece. It consists of five staves. The first staff begins with a treble clef, a key signature of one flat (B-flat), and a 3/4 time signature. The notation includes various note values, rests, and slurs. A double bar line with a repeat sign is present in the third staff, with the word "Fim" written above it. The section concludes with a circled 'S' symbol at the end of the fifth staff.

Handwritten musical notation for the Trio section. It consists of two staves. The first staff begins with a treble clef, a key signature of two sharps (F# and C#), and a 3/4 time signature. The word "TRIO" is written above the first staff. The notation includes various note values, rests, and slurs. The section concludes with a circled 'S' symbol at the end of the second staff.

D.S. até Fim.

3º. de Valsa Moda

"Alices das Flores" - Valsa

F. Cabral

Handwritten musical notation for the first part of the waltz. It consists of six staves. The first staff has a treble clef, a key signature of one flat (Bb), and a 3/4 time signature. A circled 'S.' is written above the first measure. The music features a series of quarter notes in the first staff, followed by eighth notes in the second and third staves. A double bar line with repeat dots is followed by the handwritten text 'Fim da 1ª vez ao TRIO' and a new key signature of two flats (Bb, Eb). The music continues with eighth notes and ends with a circled 'S.' at the end of the sixth staff.

Handwritten musical notation for the Trio section. It consists of two staves. The first staff has a treble clef, a key signature of two sharps (F#, C#), and a 3/4 time signature. A circled 'S.' is written above the first measure. The music features a series of quarter notes. A double bar line with repeat dots is followed by the handwritten text 'Iº' and a new key signature of two flats (Bb, Eb). The music continues with eighth notes and ends with a circled 'S.' at the end of the second staff.

D.C.

"Alices das Flores" - Valsa

F. Cabral

Tempo de Valsa Mod^a

D.C.
até Fim.

"Alices das Flores" - Valsa

F. Cabral

Tempo de Valsa Mod^a

TRIO

D.C.
ATÉ FIM.

7^o de Valsa Moderato

"Alice das Flores" - Valsa

J. Cabral

Handwritten musical score for the first part of the piece. It consists of six staves of music in 3/4 time with a key signature of one flat. The notation includes various note values, rests, and dynamic markings such as 'v' and 'f'. A circled 'S' is at the beginning, and another circled 'S' is at the end of the section. A double bar line with repeat dots is present in the third staff.

Fim ^{A 2^a vez} do TRIO

Handwritten musical score for the Trio section. It consists of two staves of music in 3/4 time with a key signature of two sharps. The notation includes various note values and rests. A circled 'S' is at the end of the first staff. A double bar line with repeat dots is present in the second staff.

DC
ATE FIM.

Alices das Flores.

F. Calval

Tempo de Valsa Moderato

Handwritten musical notation for the first section of the piece, featuring a treble clef, a key signature of one flat, and a 3/4 time signature. The notation includes various note values (quarter, eighth, sixteenth notes) and rests, with fingerings (2, 3, 4) indicated above the notes. A circled 'S' symbol is present at the beginning of the first staff.

Handwritten musical notation for the Trio section, starting with a treble clef, a key signature of two sharps, and a 3/4 time signature. The notation includes a circled 'S' symbol and first (Iº) and second (IIº) endings. The key signature changes to two flats at the end of the section.

D.C.
até Fim.

Alices das Flores - Valsa

F. Cabral

Tempo de Valsa Mod^o

2 3 4 2 3 4 5 6 7 8

Fim Ao TRIO a 2 avoz

TRIO Modo

riten.

D.C.

Ate Fim.

Tempo de Talsa Mod 2

Alices das Flores - Valsa

F. Cabral

Handwritten musical score for the first part of the piece, consisting of six staves of music in treble clef with a key signature of one sharp (F#) and a 3/4 time signature. The music features various note values, rests, and dynamic markings such as "mf" and "f". A circled "S" is present at the end of the first staff. The piece concludes with a double bar line and the word "Fim".

a 2ª vez, TRIO

Fim

Handwritten musical score for the Trio section, consisting of three staves of music in treble clef with a key signature of three sharps (F#, C#, G#) and a 3/4 time signature. The music includes dynamic markings like "mf" and "riten.". A circled "S" is present at the end of the first staff. The section concludes with a double bar line and the word "Fim".

Sem repetição

Iº Più mosso

D.C. até Fim.

Tempo de Valsa Moda

Alices das Flores - Valsa

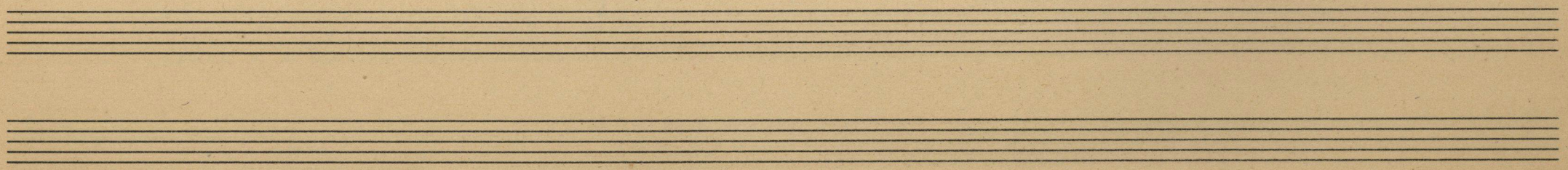
F. Cabral



Handwritten musical notation for the first section of the piece. It consists of five staves of music. The first staff begins with a treble clef, a key signature of one flat (B-flat), and a 3/4 time signature. The music is written in a style typical of early 20th-century popular music. Above the first staff, there are two sets of fingerings: the first set has numbers 2, 3, 4 above the first three measures, and the second set has numbers 2, 3, 4, 5, 6, 7, 8 above the next seven measures. The notation includes various chords and melodic lines. A circled 'S' symbol is located at the end of the fifth staff.

Fim. A 2^{as} Vez
do TRIO

Handwritten musical notation for the Trio section. It consists of three staves of music. The first staff begins with a treble clef, a key signature of two sharps (D major), and a 3/4 time signature. The word "TRIO" is written in large letters at the beginning of the first staff. Above the first staff, the word "Moder" is written with a dashed line underneath. Above the second staff, the word "Ret" is written with a dashed line underneath. Above the third staff, the word "ATE FIM." is written. The notation includes various chords and melodic lines. A circled 'S' symbol is located at the end of the first staff of this section. Roman numerals I^o and II^o are written above the second and third staves respectively.



Alices das Flores

J. Cabral

Tempo de Valsa Mode

Handwritten musical notation for the first section, consisting of six staves. The key signature is two sharps (D major). The time signature is 3/4. A circled 'S.' is written above the first staff. The notation includes various note values, rests, and phrasing slurs. The word 'Fim' is written above the end of the fourth staff.

Handwritten musical notation for the second section, consisting of three staves. The first staff is labeled 'TRIO' and has a key signature of three sharps (F# major) and a time signature of 3/4. A circled 'S.' is written above the end of the first staff. The second staff has a circled 'II°' above it. The third staff has a circled 'S.' and the instruction 'D.S. até Fim.' written below it.

4.-

Valsa Mode

Alices das Flores - Valsa

F. Cabral

Handwritten musical score for "Alices das Flores - Valsa" by F. Cabral. The score is written on ten staves. It begins in 3/4 time with a key signature of one flat (B-flat). The first staff contains the main melody with various ornaments and slurs. The second staff continues the melody with a "Fim" marking. The third staff introduces a "2a Vez Trio" section with a key signature change to two sharps (D major). The fourth and fifth staves continue the Trio section. The sixth staff ends with a circled "S" and the instruction "sem repetição". The seventh staff begins with a "TRIO" marking and a key signature change to one sharp (F major). The eighth staff continues the Trio section. The final two staves are empty. The score concludes with the instruction "D.C. até Fim".

To de Valsa Mod:

Alices das Flores - Valsa.

F. Cabral

Handwritten musical score for the first part of the piece, consisting of five systems of staves. The notation includes treble and bass clefs, a 3/4 time signature, and various musical symbols such as notes, rests, and dynamic markings like 'p' and 'mf'. The piece concludes with a double bar line and the word 'Fim'.

2.ª vez Trio

Sem repetição

Trio

Handwritten musical score for the Trio section, consisting of three systems of staves. The notation includes treble and bass clefs, a 3/4 time signature, and dynamic markings like 'mf' and 'p'. The section ends with a double bar line and the instruction 'D.C. até Fim.'

D.C. até Fim.

Alices das Flores.

F. Calvat



Valsa

2ª vez
Fim. ao Trio

Trio

D.C. até Fim.